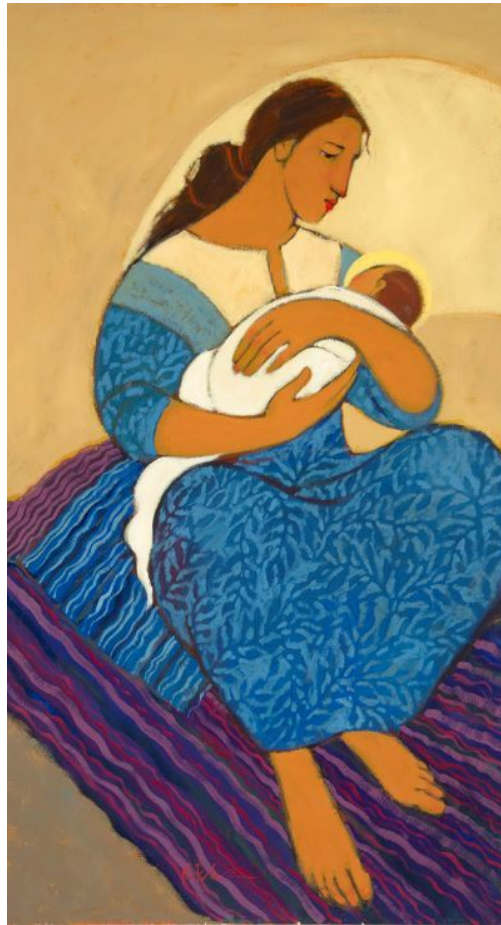




## Friday, September 10, 2021



Peterson, Kathleen. Mary and Baby Jesus, from [Art in the Christian Tradition](#), a project of the Vanderbilt Divinity Library, Nashville, TN. Original source: [Kathleen Peterson](#)

---

## A Message from the Rector





---

## Join us for worship services on September 12th at 8:00am, 10:00am and 5:00pm

---

Join us for our in-person Holy Eucharist service in the sanctuary at 8:00am (spoken) and 10:00am. The 10:00am service is livestreamed on [Facebook](#) and [YouTube](#).

At 5:00pm on Sundays, we will hold an an Evensong service.

[September 12th Holy Eucharist leaflet >](#)

### Readings for Sunday September 12, 2021

[Proverbs 1:20-33](#)

[Psalm 19](#)

[James 3:1-12](#)

[Mark 8:27-38](#)

---

**The Sunday leaflets** are also located on the Redeemer website. Look for the '**Worship & Leaflets**' tab. You can access the page [here](#).

The leaflets are usually posted in the comment section during the service on Facebook as well.

---





**Join us for the Fall Parish Picnic**

**Sunday, September 12th**

**11:15 am ~ Back Parking Lot**

**In addition to the picnic, join us for an outdoor Blessing of the Backpacks this Sunday, September 12th before the picnic begins!**

---

**Join us for Adult Bible Study!  
Sunday mornings at 8:30am on Zoom.**

Join us as we dig deeply once again into Holy Scripture! Come, read, mark and inwardly digest the Scriptures in a casual and grace-filled Zoom environment. Bring your own coffee!

Here is the [Zoom](#) link. If you need the mobile numbers to call in, they are listed in the [parish calendar](#).

---

**Join us for our Fall Parish Picnic this Sunday after the 10:00am service.**

**Picnic** We will gather in the back parking lot at 11:15am and enjoy grilled hamburgers, hot dogs, sides, salads and desserts plus drinks.

**Blessing of the Backpacks** All are invited to bring a backpack or briefcase for a blessing before the picnic begins!

---

**More Opportunities to Become Involved**

## **MORE OPPORTUNITIES TO BECOME INVOLVED**

**Autumn COVID Survey** We would like to have an understanding of where we are as a parish regarding your comfort with participating in worship and programming. We emailed a survey last week, and if you haven't already done, so, please take a moment to complete this [anonymous Autumn COVID survey](#). This will be your last opportunity to complete the survey. Thank you!

**Haiti Earthquake Relief Fund** A 7.2 magnitude earthquake struck western Haiti on Saturday, 14 August. With heavy rains from Tropical Storm Grace, the situation in Haiti deteriorated. As we pray for all who are affected by this tragedy, we urge you to donate to relief organizations. Two long-serving organizations are:

- **Episcopal Relief and Development**—ERD works with churches and other partners. Donate to the Haiti Fund [here](#).
- **Boston-based Partners in Health**—the largest nongovernmental healthcare provider in Haiti. Donate [here](#).

**Support our Afghan Allies** The deteriorating situation in Afghanistan is a humanitarian crisis that has left upwards of 550,000 Afghans internally displaced in the country since the beginning of the year, in addition to 2.9 million Afghans already internally displaced at the end of 2020.

For the many people who have asked how they can support The Episcopal Church's efforts through Episcopal Migration Ministries to resettle and provide direct assistance to Afghans seeking special immigrant visas, please visit [episcopalmigrationministries.org/give](https://episcopalmigrationministries.org/give).

**Fuel is Back!** The FUEL program is gearing up for the fall and because it is a Parish project, your help is needed.

We will again deliver to the **Newton schools, the Epiphany School** and **St. Stephen's Afterschool program**. The Epiphany tandem drivers have signed up again. Thank you! Could you and a friend be tandem drivers for St. Stephen's? The Newton schools require a whole team of drivers and subs but are shorter drives. Please let me know if you can re-commit or commit to driving in

Please let me know if you can re-commit or commit to driving in Newton.

**FUEL bags need food. From BJ's/Costco:** 10+ lbs. rice, double boxes of cheerios (Honey Nut or plain), cans of tuna (10/12 packs), cans of chicken, cans of black beans. **From Wegmans:** 1 lb. pasta (any variety), smooth marinara (plastic jar), crackers, 10-14 oz box cereal, Family Pack (24) plastic cups fruit/applesauce.

Questions or clarification, please email [Velura Perry](mailto:Velura.Perry).

[Click here to sign up.](#)

### **Lay Readers Needed for Morning and Evening Prayer**

**Broadcasts** We are looking for a few good lay leaders who would like to officiate at our Facebook Live broadcasts of Morning and Evening Prayer. If you are interested, please contact Lucinda Doran at (617) 901-6083 or [lucinda.doran@gmail.com](mailto:lucinda.doran@gmail.com).

**Red Cross Blood Drive at the Redeemer** - Our first Blood Drive date for the fall is scheduled for Friday, September 24th. Help save a life by donating blood.

## **Children's & Teens' Events**

---

Check your weekend (either Friday or Saturday) email for links for Sunday School (3yo-6th grade), Middle School Youth Group (5-8th grade), Confirmation Class, and High School Youth Group. Email [Barrie Rose](mailto:Barrie.Rose) if you'd like to be on the list!

---

## **Redeemer Calendar**

The most up-to-date Parish Calendar Listings can be found [here](#).



379 Hammond Street, Chestnut Hill, MA 02467 | 617-566-7679  
www.redeemerchestnuthill.org  
Summer office hours: M-Th 9am-3pm

[Website >](#)

[Worship >](#)

[Calendar >](#)

This message was sent to you by Church of the Redeemer, Chestnut Hill, MA. If you no longer wish to receive these emails, you can [unsubscribe](#) at any time.